

POWERPOINT PRESENTATION

NOOKSACK RIVER WATERSHED BACTERIA TMDL: WHEN POLITICAL AND SOCIAL FORCES WORK TOGETHER

Steven Hood, Environmental Engineer, Washington State Department of Ecology, 1204 Railroad Ave., Ste. 200, Bellingham, Washington 98225-5068, (360) 738-6254, shoo461@ecy.wa.gov

Nooksack Bacteria TMDL

Community Effort
Community Success

Oct. 2003 Getting It Done 1

What

Conflict

Land Use Versus Resource Protection

2

Who & What

- Tribal – Shellfish Harvest, Spiritual, Fish Resources
- Dairies – Manure Application, Animal Access
- Municipalities – WWTP, Land use
- County – On Site Septic
- State Agencies – Regulatory, Technical Assistance

3

Where

- Northwestern most watershed in continental US
- Over a quarter of 790 square mile watershed affected (134,000 acres)
- About 20% is in the flood plain (30,000 acres)

4

When

- TMDL scoping in 1995
- TMDL sampling 1996-1998
- Shellfish closures in August 1997 and September 1999
- TMDL completed in 2000
- Ongoing Implementation

5

Solutions

- Plan
 - Activities
 - Start with Existing Plans
 - Schedules
 - Regulatory Requirements
 - Existing Budgets
 - 5 years to meet Targets
 - Monitoring/Adaptive Management
 - Water Quality
 - Activities

6

Solution - Activities

- Dairy Inspections
- Septic Inspections
- Fencing and Riparian Vegetation



Solution - Activities

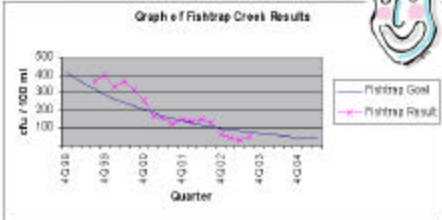
- 30 dairies per quarter inspected
- New WWTP permits
- Farm plans prepared
- Septic inspections per quarter

Solution - Adaptive Management



	WQ	WQ
Activity	State I	State II
Activity	State III	State IV

Solution - Monitoring

- NWIC Water Quality Monitoring




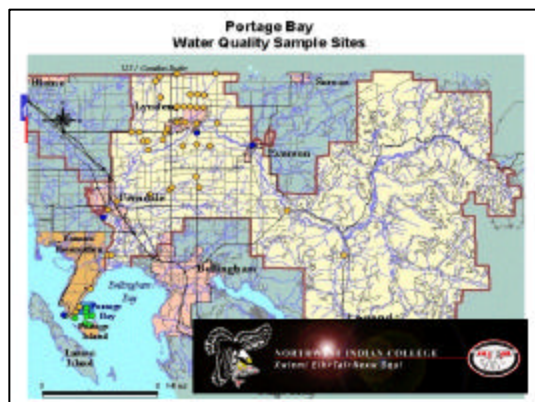
Solution - Plan - Monitoring

- Activities
 - No perfect scores
 - Changes in agency budgets make original schedule infeasible
 - No method to adopt new schedules
- Failure isn't a dead end
 - Keep focus on problem
 - Methods to revise schedule being explored

What Makes It Work

- All sources addressed
 - Enforcement
 - Equity
- Accountability
 - Agencies Report to Citizens
- Share information
 - Priority areas
 - Recommendations
- MONITORING





Additional Information

- Northwest Indian College
<http://www.nwic.edu/science/programs.htm>
- Whatcom County Conservation District
<http://www.whatcomcd.org/>
- Whatcom County
<http://www.co.whatcom.wa.us/index.jsp>
- Portage Bay Shellfish Protection District
<http://whatcomshellfish.wsu.edu/Portage/index.htm>
- Department of Health
<http://www.doh.wa.gov/ehp/ef/default.htm>
- Department of Ecology
<http://www.ecy.wa.gov/programs/wq/tmdl/watershed/index.html>
- Steve Hood
shoo451@ecy.wa.gov

14