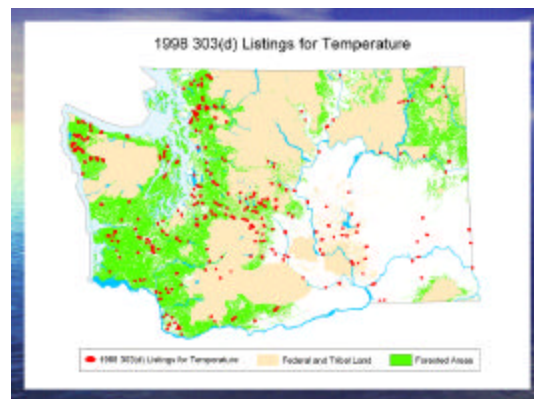
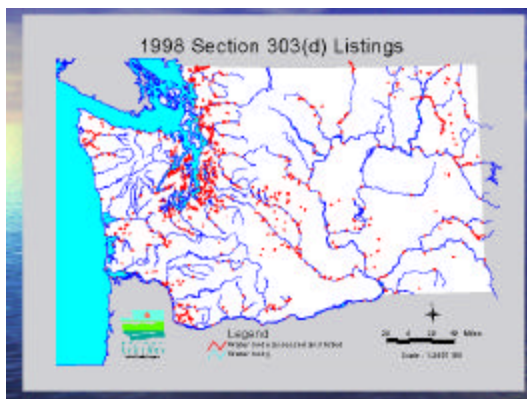
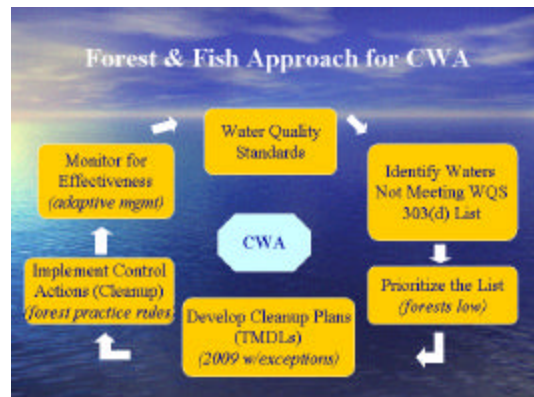
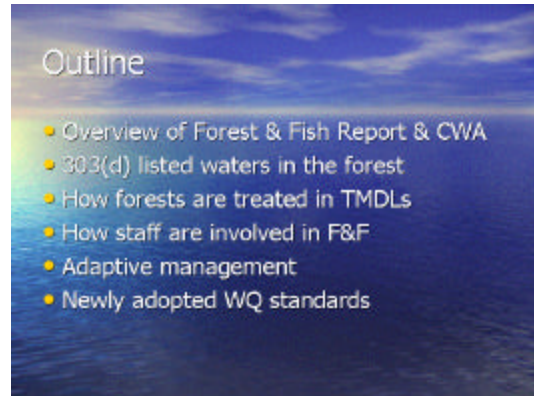


POWERPOINT PRESENTATION

FORESTS & FISH & TMDLS

Dave Peeler, Senior Policy Analyst, Washington State Department of Ecology, PO Box 47600, Olympia, Washington 98504-7600, (360) 407-6489, dpee461@ecy.wa.gov



TMDLs in the Forest

- Impaired waters in the forest environment will be listed as a low priority for TMDLs
- TMDLs in forest environment not done until after 2009, except in multiple use watersheds
- After 2009, TMDLs will be completed in those watersheds still listed in the forest environment

TMDLs in the Forest (con't)

- Multiple use TMDLs in the forest:
 - Load allocation assigned
 - Implementation plan is the forest practices rules
- After 2009, implementation plans may include more requirements if monitoring doesn't show positive trends (may require rule changes)

Staff Resources, F&F & TMDLs

- Ecology has 3.25 FTE's statewide
- Provide technical assistance in implementing forest practices rules
 - roads, wetlands & chemicals
- Available to assist TMDL teams
- USFS Water Quality Restoration Plans & TMDLs
 - Wenatchee Ntl. Forest
- Simpson Timber Co. Lands HCP/TMDL

Forest & Fish Monitoring

- Adaptive management program
 - Monitor to determine if:
 - original scientific premises correct
 - rules are being implemented correctly
 - rules are effective in cleaning up water
- If monitoring by 2009 doesn't show positive trends or WQS compliance, then Ecology may propose new rules

New Water Quality Standards

- New temperature standards
 - Bull trout spawning & early rearing (12° C)
 - Salmon & trout spawning & core rearing (16° C)
 - Salmon & trout spawning, non-core rearing & migration (17.5° C)
 - Salmon & trout rearing & migration only (17.5° C)
 - Non-anadromous interior red-band trout (18° C)
 - Indigenous warm water species (20° C)
- Forming a work group to:
 - Determine if and how F&F may need to change
 - Recommend steps needed to implement

